



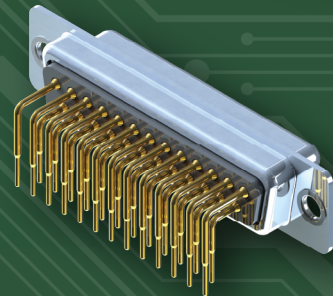
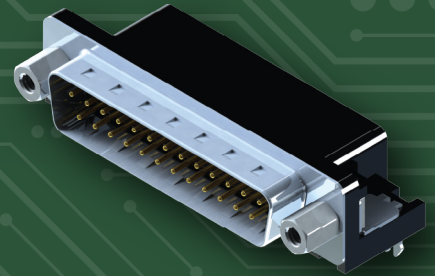
D-Sub Connectors

EDAC



D-Sub Connectors

EDAC offers an extensive range of industry standard D-Subminiature connectors. Available in standard density with 9, 15, 25, 37, and 50 contacts, or high density versions with 15, 26, 44, 62 and 78 contacts. Vertical and right angle orientations, along with a variety of contact terminations, platings and mounting options are available. Also available in a stacked version.

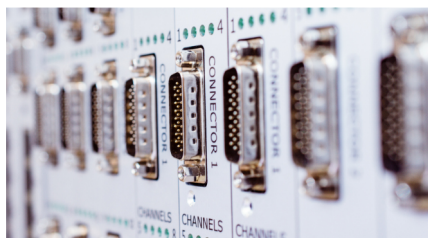


Features

- Industry standard footprints available for standard and high density right angle D-Sub connectors
- Standard E, A, B, C, and D shell sizes with contact positions of 9, 15, 25, 37, and 50 for standard density or 15, 26, 44, 62, and 78 for high density D-Sub connectors, respectively
- PC tail, press-fit, solder cup, and crimp contact terminations available
- Metal shell provides EMI/RFI shielding while plug shell indents provide grounding and additional mating retention
- Various board and flange mounting options are available for exceptional retention to the PC board or panel and connector
- Metal or plastic body is available
- High temperature options are available



EDAC



D-Sub Connectors

Series	No. of Contacts	Standard or High Density	Cable or Board Mount	Orientation	Footprint	Contact Terminations	Plating Options
Plug/ Receptacle							
621/622	9, 15, 25, 37	Standard	Board	Right Angle	0.318" (8.08mm)	PC Tail	Flash - 30µ" Gold
623/624	9, 15, 25	Standard	Board	Right Angle	0.197" (5.00mm)	PC Tail	Flash - 30µ" Gold
625/626	9, 15, 25, 37	Standard	Board	Right Angle	0.584" (14.84mm)	PC Tail	Flash - 30µ" Gold
627/628*	9, 15, 25, 37	Standard	Board	Vertical	N/A	PC Tail, Press-fit	Flash - 30µ" Gold
627/628**	9, 15, 25, 37, 50	Standard	Board or Cable	Vertical	N/A	PC Tail, Solder Cup, Crimp	Flash - 30µ" Gold
629/630	9, 15, 25, 37	Standard	Board	Right Angle	0.406" (10.30mm)	PC Tail	Flash - 30µ" Gold
632 (Receptacle)	15	High	Board	Right Angle	0.121" (3.08mm)	PC Tail	Flash - 30µ" Gold
633/634	15, 26, 44, 62, 78	High	Board	Right Angle	0.350" (8.89mm)	PC Tail	Flash - 30µ" Gold
637/638	15, 26, 44, 62, 78	High	Board or Cable	Vertical	N/A	PC Tail, Solder Cup, Crimp	Flash - 30µ" Gold
661-664	9, 15, 25, 37	Standard	Board	Right Angle	0.318" (8.08mm)	PC Tail	Flash - 30µ" Gold

* Plastic body

** Metal body

Widest range of options available to meet all design requirements

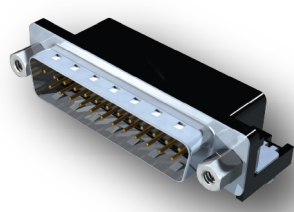
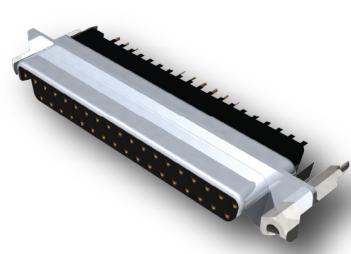
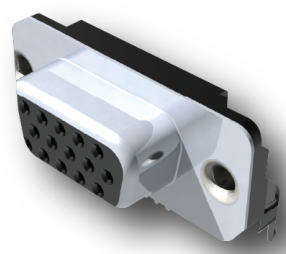
Industry standard foot prints for drop in replacements



EDAC

For More Information

edac.net



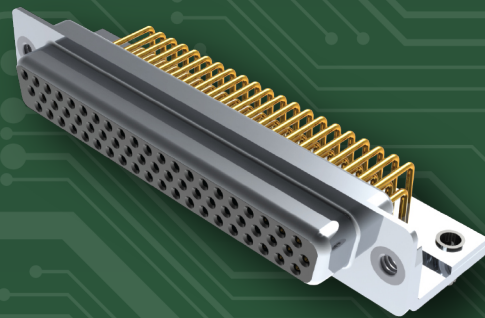


Machined D-Sub Connectors

The EDAC machined D-Subminiature connectors are manufactured using precision machined contacts available in 9, 15, 25, 26, 37, 44, 50 and 62 positions. Standard and high density, with vertical and right angle orientations available. A number of mounting and contact plating options are available. The 5 amp current rating along with a wide operating temperature range provides for use in rugged environments.

Features

- 5 amp precision machined contacts
- Standard E, A, B, C, and D shell sizes with contact positions of 9, 15, 25, 37, and 50 for standard density or 15, 26, 44, and 62 for high density D-Sub connectors, respectively
- PC tail and solder cup contact terminations are available
- Metal shell provides EMI/RFI shielding while plug shell indents provide grounding and additional mating retention
- Various board and flange mounting options are available for exceptional retention to the PC board or panel and connector
- Wide operating temperature of -55°C to +125°C

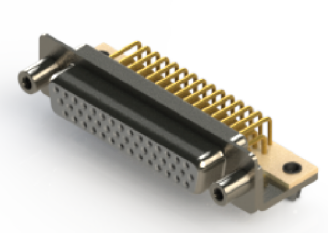
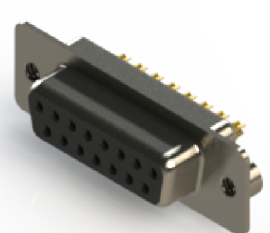
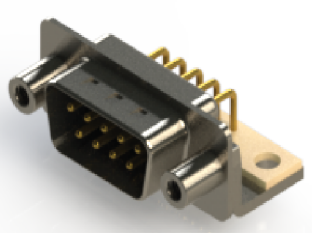


Machined D-Sub Connectors

Series	No. of Contacts	Standard or High Density	Cable or Board Mount	Orientation	Footprint	Contact Terminations	Plating Options
Plug/ Receptacle							
621M/622M	9, 15, 25, 37, 50	Standard	Board	Right Angle	0.283" (7.20mm)	PC Tail	Flash - 30µ" Gold
627M/628M	9, 15, 25, 37, 50	Standard	Board or Cable	Vertical	N/A	PC Tail, Solder Cup	Flash - 30µ" Gold
629M/630M	9, 15, 25, 37, 50	Standard	Board	Right Angle	0.370" (9.40mm)	PC Tail	Flash - 30µ" Gold
633M/634M	15, 26, 44, 62	High	Board	Right Angle	0.350" (8.89mm)	PC Tail	Flash - 30µ" Gold
637M/638M	15, 26, 44, 62	High	Board or Cable	Vertical	N/A	PC Tail, Solder Cup	Flash - 30µ" Gold

Widest range of options available to meet all design requirements

Industry standard foot prints for drop in replacements



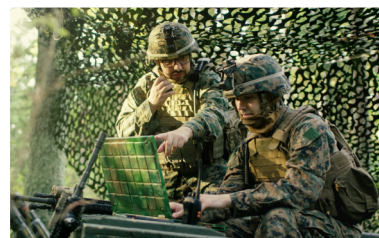
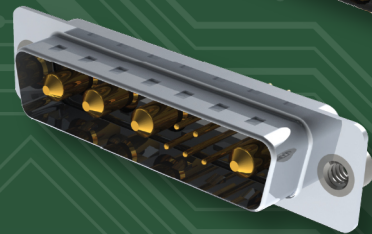
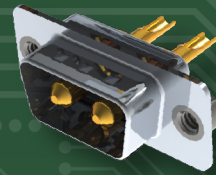


Power Combo D-Sub Connectors

The EDAC power combo or mixed contact D-Subminiature style connector combines standard signal contacts with power or coaxial contacts in the same connector. Power combo D-Subs use standard D-Sub shell sizes of E (size 9), A (size 15), B (size 25), C (size 37), and D (size 50) and are offered in 22 different industry standard contact layout configurations (see next page). Power contacts up to 40 amps, or coaxial contacts with either 50 or 75 ohm impedance ratings are available.

Features

- Vertical and right angle orientations available
- Signal contacts available at 5 amps while power contacts offer 10, 20, 30, and 40 amps. Coaxial contacts are also available and offer 50 or 75 ohm impedance ratings
- PC tail and solder cup contact terminations are available
- Metal shell provides EMI/RFI shielding while plug shell indents provide grounding and additional mating retention
- Various board and flange mounting options are available for exceptional retention to the PC board or panel and connector



Power Combo D-Sub Connectors

Series	Contact Layout Options	Cable or Board Mount	Orientation	Contact Terminations	Current Rating (Power Contacts)	Impedance Rating (Coaxial Contacts)	Plating Options
Plug/ Receptacle							
627C/628C	* See Note and Table	Board or Cable	Vertical	PC Tail, Solder Cup	10A, 20A, 30A, 40A	50 or 75 Ohms	Flash - 30µ" Gold
629C/630C	* See Note and Table	Board	Right Angle	PC Tail	10A, 20A, 30A, 40A	50 or 75 Ohms	Flash - 30µ" Gold

Widest range of options available to meet all design requirements

Power and data signal contact in a single package

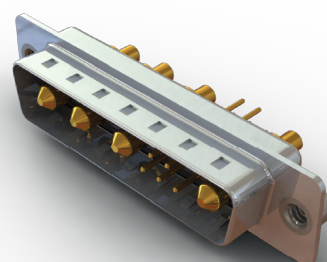
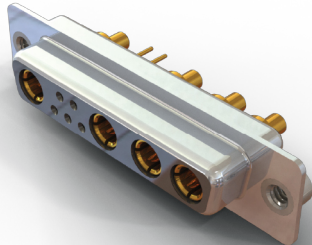
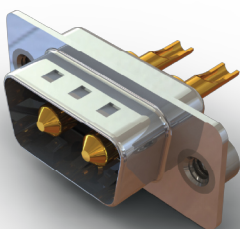
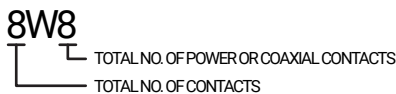
Waterproof Power Combo D-Sub Connectors

627WC/628WC	* See Note and Table	Board or Cable	Vertical	PC Tail, Solder Cup	10A, 20A, 30A, 40A	N/A	Flash - 30µ" Gold
629WC/630WC	* See Note and Table	Board	Right Angle	PC Tail	10A, 20A, 30A, 40A	N/A	Flash - 30µ" Gold

Note: Power combo or mixed contact D-Sub connectors use standard contact layouts within standard shell sizes. The contact layouts can be only power or coaxial contacts or a combination of power or coaxial with signal contacts. See the following table for reference.

Table - Contact Layout Options

Series	Standard Shell Size	Power/Coaxial Contacts Only		Combination of Power/Coaxial with Signal Contacts			
All	E - Size 9 Contact Shell	2W2	2WK2	5W1			
All	A - Size 15 Contact Shell	3W3	3WK3	7W2	11W1		
All	B - Size 25 Contact Shell	5W5		9W4	13W3	17W2	21W1
627C, 628C, 629C, 630C	C - Size 37 Contact Shell	8W8		13W6	17W5	25W3	27W2 21W4
627C, 628C, 629C, 630C	D - Size 50 Contact Shell			24W7	36W4	43W2	47W1



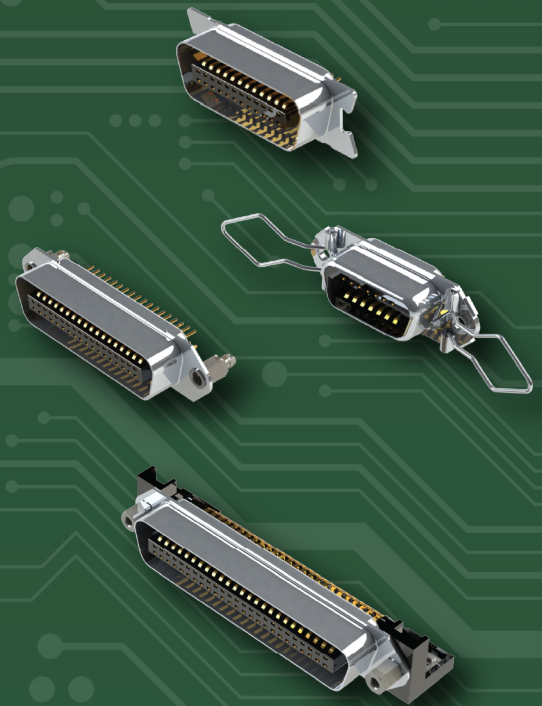


Parallel Interface D-Sub Connectors

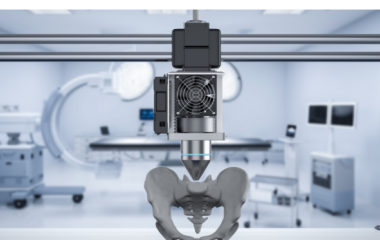
EDAC B57 connectors are parallel port interfaces fully compatible with all industry standards. Ribbon style contacts are utilized along with board locks for superior mating and retention forces. Both board receptacle and male plug cable versions are available. Also known as centronics connectors.

Features

- Vertical and right angle orientations available
- 14, 24, 36, and 50 positions available
- Durable phosphor bronze contacts with 1 amp current rating
- Male plug on cable side has IDC contacts for easy assembly
- Various board and flange mounting options are available for exceptional retention to the PC board or panel and connector
- Plating options from flash to 30 μ " gold



EDAC

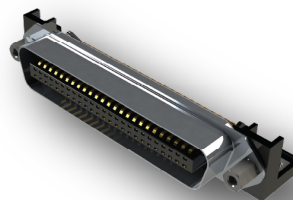
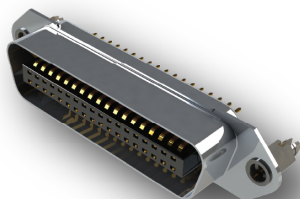
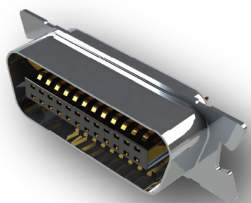


Parallel Interface D-Sub Connectors

Series	No. of Contacts	Cable or Board Mount	Orientation	Retention	Contact Terminations	Plating Options
B57	14, 24, 36, 50	Board or Cable	Vertical or Right Angle	Yes	PC Tail, Press-fit, Solder Cup	Flash - 30μ" Gold

Facilitates parallel communication, allowing data to be transmitted simultaneously over separate wires

Enables fast data transfer rates



EDAC

For More Information

edac.net



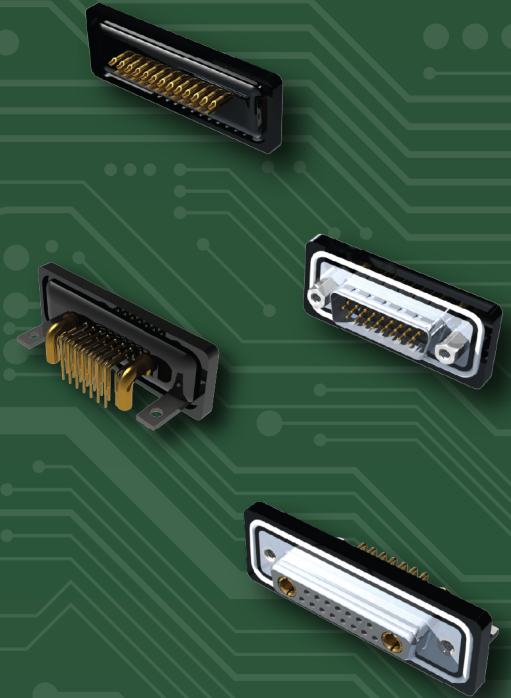


Waterproof D-Sub Connectors

The EDAC IP67 rated waterproof D-Subminiature connectors are available in both standard and high density packages. Plug and receptacles in 9, 15, 25, 26, 37, and 44 pin versions are available as well as high power combo configurations. Vertical and right angle footprints, with a variety of termination styles, contact plating thicknesses, and mounting options are available. A solid performer in rugged applications and harsh environments.

Features

- Standard E, A, B, and C shell sizes with contact positions of 9, 15, 25, and 37 for standard density or 15, 26, and 44 for high density D-Sub connectors, respectively. Waterproof power combo uses shell sizes E, A, and B and is offered in 12 industry standard contact layout configurations (see next page)
- Signal contacts for waterproof or signal combined with power contacts for power combo up to 40 amps
- Various board and flange mounting options are available for exceptional retention to the PC board or panel and connector
- IP67 as per IEC60526 is achieved by a special epoxy sealing process, providing zero ingress with no wicking up the leads and a smooth molded finish with no air bubbles. Combined with an o-ring seal to panel



 edac.net    



Waterproof D-Sub Connectors

Series	No. of Contacts	Standard or High Density	Cable or Board Mount	Orientation	Footprint	Contact Terminations	Plating Options
Plug/ Receptacle							
627W/628W	9, 15, 25, 37	Standard	Board or Cable	Vertical	N/A	PC Tail, Solder Cup	Flash - 30µ" Gold
629W/630W	9, 15, 25	Standard	Board	Right Angle	0.405" (10.29mm)	PC Tail	Flash - 30µ" Gold
633W/634W	15, 26, 44	High	Board	Right Angle	0.383" (9.73mm)	PC Tail	Flash - 30µ" Gold
637W/638W	15, 26, 44	High	Board or Cable	Vertical	N/A	PC Tail, Solder Cup	Flash - 30µ" Gold

Widest range of options available to meet all design requirements

Superior IP67 waterproof solution that with stands harsh environments

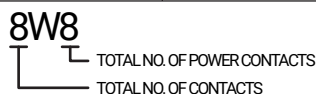
Waterproof Power Combo D-Sub Connectors

	Contact Layout Options	Cable or Board Mount	Orientation	Contact Terminations	Current Rating (Power Contacts)	Plating Options
627WC/628WC	* See Note and Table	Board or Cable	Vertical	PC Tail, Solder Cup	10A, 20A, 30A, 40A	Flash - 30µ" Gold
629WC/630WC	* See Note and Table	Board	Right Angle	PC Tail	10A, 20A, 30A, 40A	Flash - 30µ" Gold

Note: Waterproof power combo or mixed contact D-Sub connectors use standard contact layouts within standard shell sizes. The contact layouts can be only power contacts or a combination of power with signal contacts. See the following table for reference on waterproof power combo D-Sub connectors.

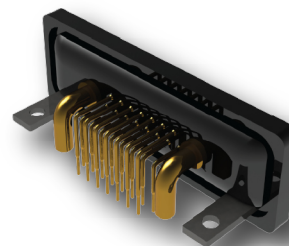
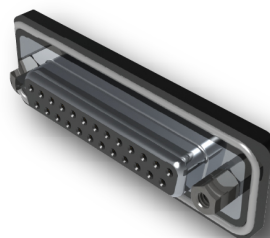
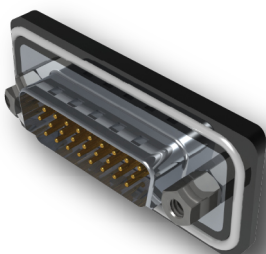
Table - Contact Layout Options

Series	Standard Shell Size	Power Contacts Only		Combination of Power and Signal Contacts			
627WC, 628WC, 629WC, 630WC	E - Size 9 Contact Shell	2W2	2WK2	5W1			
627WC, 628WC, 629WC, 630WC	A - Size 15 Contact Shell	3W3	3WK3	7W2	11W1		
627WC, 628WC, 629WC, 630WC	B - Size 25 Contact Shell	5W5		9W4	13W3	17W2	21W1



For More Information

edac.net



EDAC

161 Alden Road
Unit 7 & 8
Markham, Ontario
Canada
L3R 3W7
Tel: +1 416 754 3322
E-mail: support@edac.net

EDAC Europe

12 Fleming Close,
Park Farm North,
Wellingborough,
United Kingdom
NN8 6UF
Tel: (44) 1933-427300
Fax: (44) 1933-677611
E-mail: enquiries@edaceurope.net

Established in 1966, EDAC soon became a world leader in providing connectors for card edge and rack and panel applications. Since then, we have expanded our product offering to include one of the widest ranges of interconnect solutions in the world. Products include D-Sub, RJ45, USB, HDMI, inline plug and socket, headers, spring loaded pogo pin, and waterproof connectors. Cable assemblies and custom solutions are also available. Our innovation guides us into new customer opportunities as we challenge the status quo. This belief resonates throughout the organization and results in exceptional quality service globally.



Connect With Us . . . Experience Makes The Difference